



Service Bulletin #: SB11
Title: EX500 Satellite Communicator Software
Field Update

1. Planning Information

1.1 Effectivity/Compatibility

This Service Bulletin applies to all Avidyne EX500 units with the following hardware part number:

Part Number	Rev.
700-00007-00X	08, 09, 10

1.2 Concurrent Requirements

None

1.3 Reason

Installation of new satellite transceiver software in the FlightMax EX500.

1.4 Description

This service bulletin describes the procedure for updating the internal datalink transceiver software on the EX500. The procedure consists of connecting an Avidyne data loader (external ZIP drive) to the USB port located on the unit bezel and powering up the unit. This update may be performed without removing the unit from the aircraft.

1.5 Compliance

This Service Bulletin is applicable to the FlightMax EX500 and is accomplished on condition for the upgrade of transceiver software.

To determine the current version information of the transceiver, perform steps 11, 12 and 29 – 33 of Section 3.1 of this Service Bulletin. Proceed with Section 3 of this Service Bulletin if any of the following conditions apply:

“Quake Software Version” is either 10162 or 1173

“Custom Software Version” is either blank or is “Nov 6 2002”

1.6 Approval

The accomplishment instructions contained in Section 3 & 6 are FAA approved.



1.7 Manpower

Replacement of the software should take one person approximately 60 minutes.

1.8 Weight and Balance

No change.

1.9 Electrical Load Data

No change.

1.10 Software Accomplishment

Installation of new software.

1.11 Reference

None.

1.12 Publications affected

None.

2. Material – Cost and Availability

Service Bulletin #11 installation kit, part number 850-00010-209, maybe obtained by calling Avidyne at 1-800 AVIDYNE. Software may be downloaded by registered users from www.myavidyne.com.

NOTE: This modification must be performed by a FAA authorized Avionics Repair Station.

3. Accomplishment Instructions

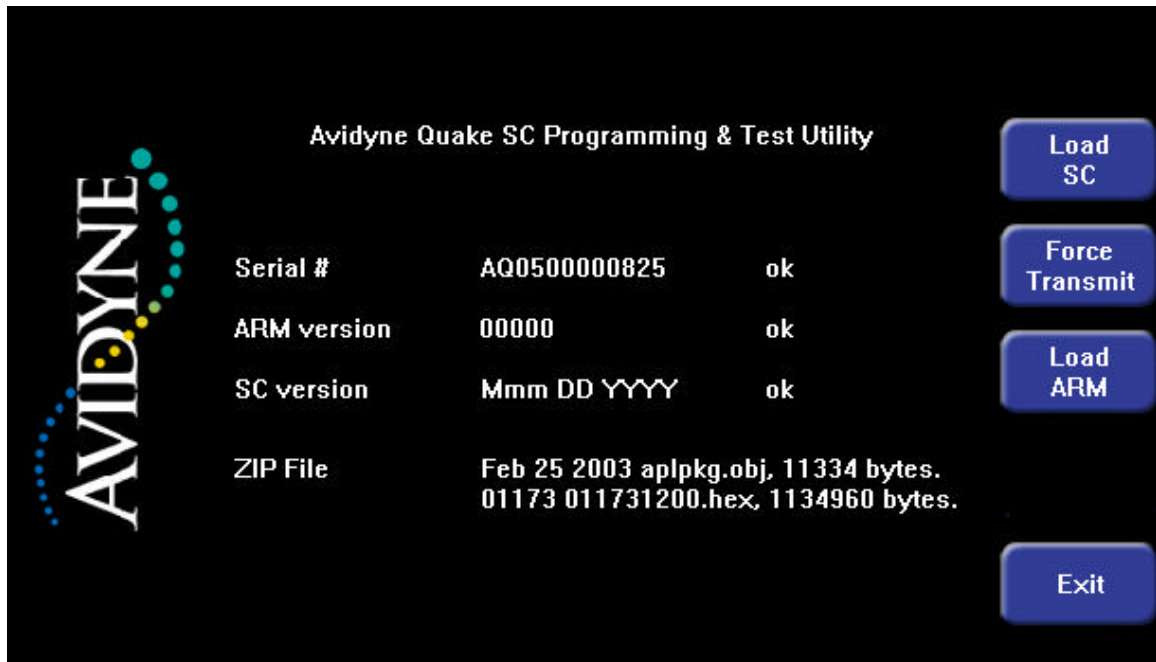
3.1 Installing new datalink transceiver software

Required materials:

1. _____ Avidyne 700-00007-XXX-() MFD with 530-00120-000 Rev 01 software as displayed on splash screen after initial power-up.
2. _____ 1 Data loader (Zip) drive, Avidyne P/N 200-00029-000, connected to the FlightMax EX500
3. _____ 1 EX500 SC Loader Disk, Avidyne P/N 510-00085-000, Rev 02

3.1.1 Update procedures:

4. _____ Power-up the FlightMax EX500 with the Zip drive attached and disk 510-00085-000 inserted in the zip drive.
5. _____ Verify that after initialization, the following screen is displayed (ARM version may differ; SC version may differ or be dashed)



6. _____ Press the Load ARM button
7. _____ Verify that the loader proceeds through the following stages:
 - a. _____ Rebooting SC...
 - b. _____ Launching Loader...
 - c. _____ Loading ARM X% complete...
 - d. _____ Completed, waiting for result...
 - e. _____ Success, waiting for SC reboot...
 - f. _____ Screen returns to format shown above



8. ____ Verify ARM version and SC versions now match the following values.
 - a. ____ SC version matches date Feb 25 2003
 - b. ____ ARM version matches number 4213 if the SC number begins with "DQ" or matches 6273 if the SC number begins with "AQ".
9. ____ If the update procedure fails reattempt the process. If the procedure fails again, call Avidyne Technical Support at 1-888-723-7592
10. ____ Press Exit to close the loader and continue with EX500 start -up.

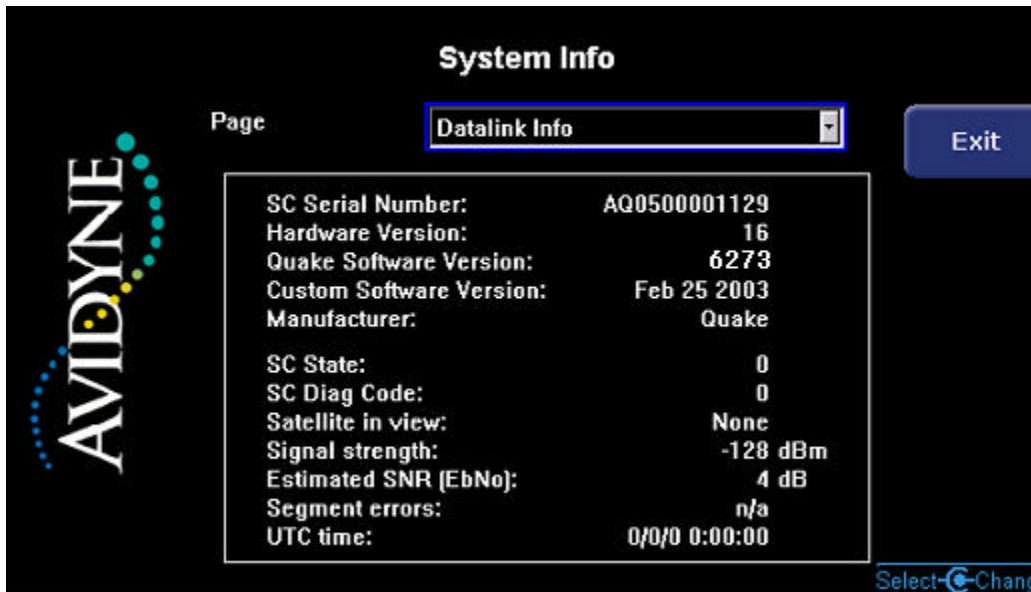
4. Update Validation

4.1 Software Updated

11. ____ Power on the FlightMax EX500
12. ____ Press any bezel key to clear the splash-screen.
13. ____ Verify that the BRT button shows a brightness window.
14. ____ On a system with dual-concentric knobs, press BRT to show the brightness window and verify that turning the knob varies brightness as follows:
 15. ____ Right Outer Knob clockwise increases brightness in coarse steps
 16. ____ Right Outer Knob counter-clockwise decreases brightness in coarse steps
 17. ____ Right Inner Knob clockwise increases brightness in fine steps
 18. ____ Right Inner Knob counter-clockwise decreases brightness in fine steps
- On a system with single knobs, press BRT to show the brightness window and verify that turning the knobs varies brightness as follows:
 19. ____ Left Knob clockwise increases brightness in coarse steps
 20. ____ Left Knob counter-clockwise decreases brightness in coarse steps
 21. ____ Right Knob clockwise increases brightness in fine steps
 22. ____ Right Knob counter-clockwise decreases brightness in fine steps
23. ____ Change Page to Setup and back to Map
24. ____ Change Map range up and down
25. ____ Verify operation of each bezel key (you may need to change pages to find active buttons for each key). If no active button can be found to match a key, re-start the system and use the key to clear the splash screen.
26. ____ On a system with dual-concentric knobs, verify operation of the left knob by operating Radar bearing and tilt.

4.2 Datalink Operational Check

27. ____ Power on the FlightMax EX500
28. ____ Change page to "Setup Page".
29. ____ Depress and hold (for approximately 5 seconds) the upper most and middle buttons on the left side of the bezel to enter the "Maintenance Mode" page (press the "Cancel" button if a maintenance mode sub-page is displayed to return to the "Maintenance Page").
30. ____ Press the "System Info" button. The "Port Info" page will be displayed.
31. ____ Select "Datalink Info" with the change knob.
32. ____ Determine the Quake Software Version. Prior to accomplishment of this Service Bulletin, the Quake Software Version may be either "10162" or "1173." After completion of this Service Bulletin, verify that the Quake Software Version is:
 - 4213 if the SC Serial Number begins with "DQ"
 - 6273 if the SC Serial Number begins with "AQ"
33. ____ Determine the Custom Software Version. Prior to accomplishment of this Service Bulletin, the Custom Software Version is "Nov 6 2002". After completion of this Service Bulletin, verify that the Custom Software version is "Feb. 25, 2003."



34. ____ Verify that pressing and holding the PWR key brings up a countdown window and that, after 4 seconds, the system is powered off.



SERVICE BULLETIN 11

This Service Bulletin has now been successfully completed.